



Saint Henry Cluster

Nineteenth Monday in Ordinary Time

August 10, 2020

Opening Hymn

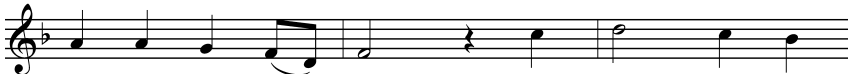
Open Wide the Doors to Christ



1. O - pen wide the doors to Christ, Let him shep - herd
2. O - pen wide the doors to Christ, Show to all his
3. O - pen wide the doors to Christ, Go forth in his



1. you. Wel - come him in - to your heart,
2. face. Live for oth - ers as he lived,
3. name. For his pres - ence chang - es lives



1. That your love be true. For Christ is the
2. Filled with truth and grace. For Christ is the
3. When our lives pro - claim That Christ is the



- 1.-3. Light, And Christ is the Way, And



- 1.-3. Christ is the Love who loves you.

LITURGY OF THE WORD

First Reading 2 Corinthians 9: 6-10

Responsorial Psalm Psalm 112

Response: **Blessed the man who is gracious and lends to those in need.**

Gospel John 12: 24-26

LITURGY OF THE EUCHARIST

HOLY, HOLY, HOLY

4

Ho-ly, Ho-ly, Ho-ly Lord God of
hosts. Heav-en and earth are full of your glo-ry.
Ho - san - na in the high-est. Bless-ed is he who
comes in the name of the Lord. Ho - san - na in the
high-est. Ho - san - na in the high - est.

MEMORIAL ACCLAMATION A



We pro-claim your Death, O Lord, and pro-fess your Res - ur -



rec-tion un - til you come a - gain, un - til you come a - gain.

Text: ICEL, © 2010
Music: *Mass of Creation*, Marty Haugen, © 2010, GIA Publications, Inc.

AMEN



A - men, a - men, a - men!

Music: *Mass of Creation*, Marty Haugen, © 1984, 1985, GIA Publications, Inc.

Lamb of God



Lamb of God, you take a-way the sins of the



world, have mer - cy on us.



world, grant us peace.

Music: *Mass of Creation*, Marty Haugen, © 1984, 1985, 2010, GIA Publications, Inc.

Closing Hymn

ALLELUIA! SING TO JESUS

HYFRYDOL



1. Al - le - lu - ia! sing to Je - sus! His the
2. Al - le - lu - ia! not as or - phans Are we
3. Al - le - lu - ia! Bread of An - gels, Here on
4. Al - le - lu - ia! King e - ter - nal, You the
5. Al - le - lu - ia! Al - le - lu - ia! Glo - ry



1. scep - ter, his the throne; Al - le - lu - ia!
2. left in sor - row now; Al - le - lu - ia!
3. earth our food, our stay! Al - le - lu - ia!
4. Lord of lords we own; Al - le - lu - ia!
5. be to God on high; Al - le - lu - ia



1. his the tri - umph, His the vic - to - ry a - lone;
2. he is near us, Faith be - lieves, nor ques - tions how:
3. here the sin - ful Flee to you from day to day:
4. born of Ma - ry, Earth your foot - stool, heav'n your throne:
5. to the Sav - ior Who has won the vic - to - ry;



1. Hark! the songs of peace - ful Zi - on Thun - der
2. Though the cloud from sight re - ceived him, When the
3. In - ter - ces - sor, friend of sin - ners, Earth's re -
4. You with - in the veil have en - tered, Robed in
5. Al - le - lu - ia to the Spir - it, Font of



1. like a might - y flood; Je - sus out of ev - 'ry
2. for - ty days were o'er, Shall our hearts for - get his
3. deem - er, plead for me, Where the songs of all the
4. flesh, our great high priest; Here on earth both priest and
5. love and sanc - ti - ty; Al - le - lu - ia! Al - le -



1. na - tion Has re - deemed us by his blood.
2. prom - ise? "I am with you ev - er - more!"
3. sin - less Sweep a - cross the crys - tal sea.
4. vic - tim In the Eu - cha - ris - tic feast.
5. lu - ia! To the tri - une maj - es - ty.

Text: 87 87 D; based on Revelation 5:9-14; William C. Dix, 1837-1898, and Compilers.
Music: Rowland H. Prichard, 1811-1887.

All music in this worship aid has been used with the permission of the composers and respective publishers: One License.net 7343 S. Mason Ave., Chicago, IL 60638, license#A728177.

G.I.A. Publications, Inc. 7404 S. Mason Ave., Chicago, IL 60638.

OCP Publications, 5536 NE Hassalo St., Portland, OR 97213

Mass Setting comes from *Mass of Creation*, GIA, by Marty Haugen